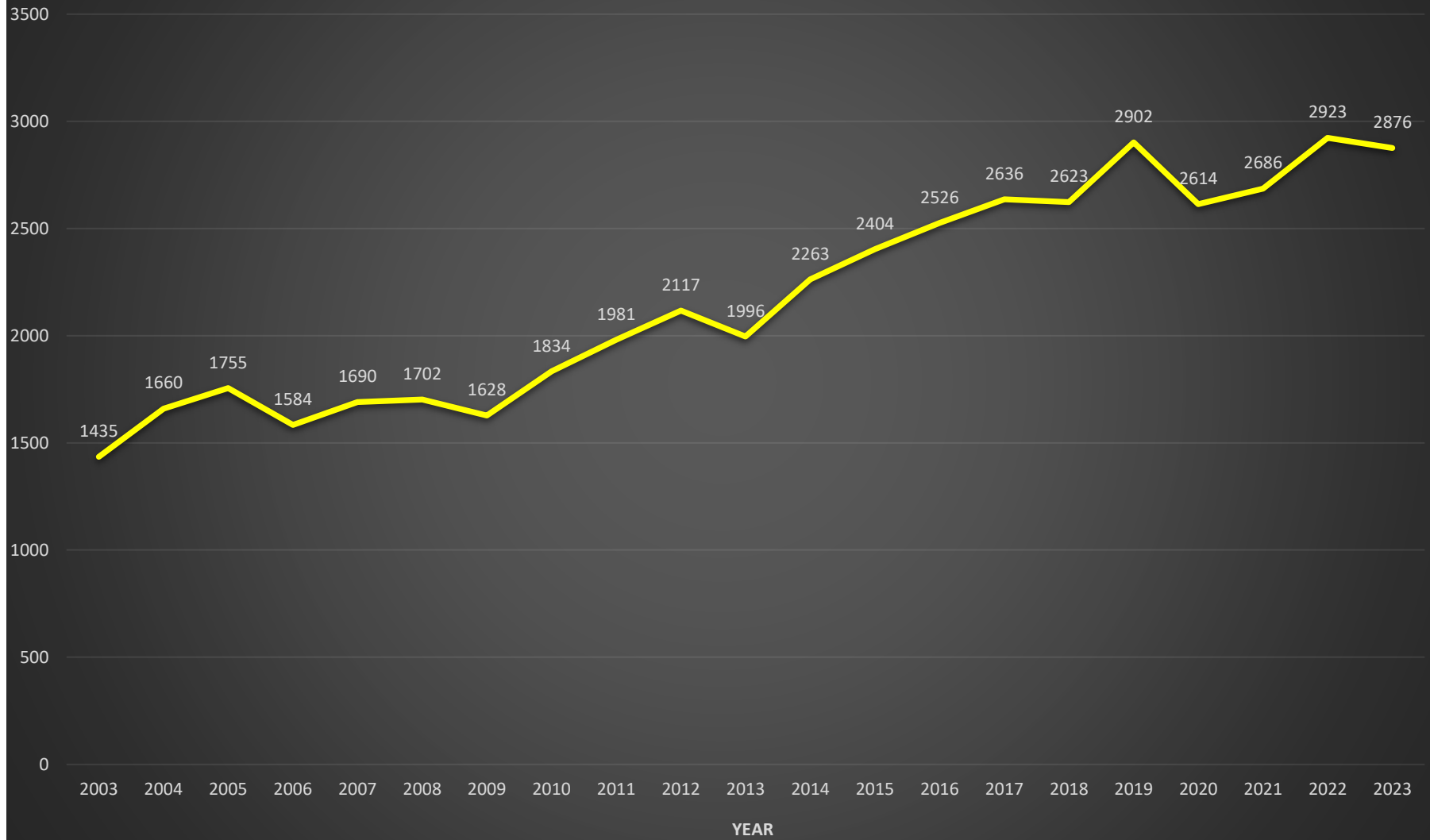


Combined EMS & Fire Run Totals



Automatic Aid Summary Report

Range: 2023 Full Year

In-District Runs - 1,523 (52.96%)

New Albany (Franklin County)	1,289	44.82%
Plain Township	234	8.14%

Automatic Aid Received

out of 1,523 PTFD runs

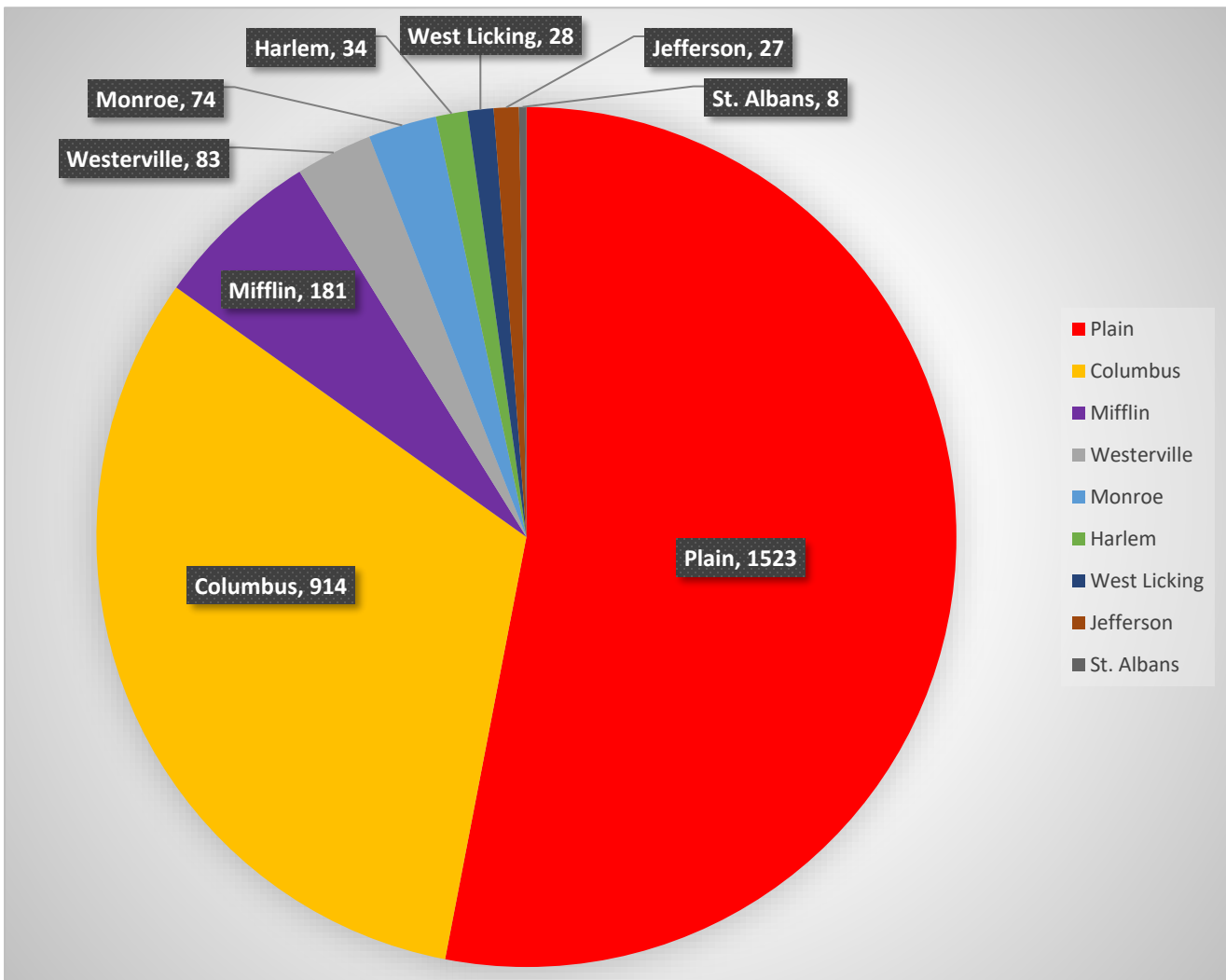
Department Name

Automatic Aid Given

Columbus	914	31.78%	24	1.58%
Mifflin Township	181	6.29%	104	6.83%
Westerville	83	2.89%	25	1.64%
Monroe Township (40 in N.A.)	74	2.57%	104	6.83%
Harlem Township	34	1.18%	11	0.72%
West Licking (13 in N.A.)	28	0.97%	8	0.53%
Jefferson Township	27	0.94%	46	3.02%
St. Albans Township	8	0.28%	0	0.00%
Genoa Township	2	0.07%	0	0.00%
Whitehall	2	0.07%	0	0.00%
Worthington	0	0.00%	1	0.07%
Hartford Township	0	0.00%	1	0.07%

Total Count 2876 100.00%

324 21.27%



Monthly Totals By Incident Type

Plain Township Fire Department

Date Range: From 01/01/2023 to 12/31/2023

Company: All Companies

Incident Type	Jan	Feb	Mar	Apr	May	Jun	Jul	Aug	Sep	Oct	Nov	Dec	TOTAL	%
111-Building fire	4	2	3	0	1	0	6	0	4	0	6	2	28	1%
113-Cooking fire, confined to container	2	0	1	2	0	1	1	0	1	0	0	3	11	0.4%
116-Fuel burner/boiler malfunction, fire confined	2	0	0	0	0	0	0	0	0	0	0	0	2	0.1%
118-Trash or rubbish fire, contained	0	0	0	0	0	0	0	0	1	0	0	0	1	0.0%
121-Fire in mobile home used as fixed residence	0	0	0	0	0	0	0	0	0	0	1	0	1	0.0%
131-Passenger vehicle fire	1	0	0	0	0	0	1	0	0	1	1	0	4	0.1%
138-Off-road vehicle or heavy equipment fire	0	0	0	0	0	1	0	0	0	0	0	0	1	0.0%
140-Natural vegetation fire, other	0	0	0	0	0	0	0	0	1	0	0	0	1	0.0%
142-Brush or brush-and-grass mixture fire	0	0	0	0	1	0	0	0	0	0	2	0	3	0.1%
143-Grass fire	0	0	0	0	0	0	1	0	0	0	0	0	1	0.0%
151-Outside rubbish, trash or waste fire	0	1	0	0	0	0	0	0	0	0	0	0	1	0.0%
154-Dumpster or other outside trash receptacle fire	0	0	0	1	0	0	0	0	0	0	0	0	1	0.0%
1601-Mulch fire	0	0	0	2	3	2	0	0	0	1	2	0	10	0.3%
162-Outside equipment fire	0	0	0	0	0	1	0	1	0	1	0	0	3	0.1%
1621-Electric pole/wire fire	0	0	0	0	0	1	1	0	0	1	0	0	3	0.1%
220-Overpressure rupture from air or gas, other	1	0	0	0	0	0	0	0	0	0	0	0	1	0.0%
251-Excessive heat, scorch burns with no ignition	0	0	0	0	0	0	1	0	0	0	1	1	3	0.1%
311-Medical assist, assist EMS crew	3	3	4	3	5	6	9	3	8	8	11	8	71	2.5%
3111-Medical alarm, accidental false	0	0	0	0	0	0	0	0	0	1	0	0	1	0.0%
321-EMS call, excluding vehicle accident with injury	100	117	111	115	105	109	116	109	122	127	108	122	1,361	47.3%
3211-Medical alarm, accidental false	1	0	1	0	0	2	2	1	4	1	2	2	16	0.6%
3212-Medical alarm, malfunction	0	0	0	0	0	0	0	1	0	0	0	1	2	0.1%
3213-FF injury, non-incident	1	0	0	0	2	1	0	0	0	0	0	0	4	0.1%
322-Motor vehicle accident with injuries	1	3	1	3	3	5	4	2	6	9	3	5	45	1.6%
323-Motor vehicle/pedestrian accident (MV Ped)	0	0	0	0	0	1	2	0	0	0	0	0	3	0.1%
324-Motor vehicle accident with no injuries.	10	6	4	7	9	5	6	5	5	10	11	8	86	3%
331-Lock-in (if lock out , use 511)	0	0	0	1	0	0	1	1	1	1	1	0	6	0.2%
352-Extrication of victim(s) from vehicle	1	1	1	1	0	0	0	0	0	0	1	1	6	0.2%
353-Removal of victim(s) from stalled elevator	0	1	1	0	0	1	1	0	1	0	0	0	5	0.2%
356-High-angle rescue	0	0	0	0	0	0	0	0	0	0	1	0	1	0.0%
365-Watercraft rescue	0	0	0	0	0	0	0	1	0	0	0	0	1	0.0%
381-Rescue or EMS standby	0	0	2	0	0	2	0	1	0	0	0	2	7	0.2%
3811-Special Event Standby	0	0	0	0	1	3	2	3	5	4	1	0	19	0.7%
411-Gasoline or other flammable liquid spill	0	0	1	0	0	0	2	2	0	0	0	0	5	0.2%
412-Gas leak (natural gas or LPG)	0	0	4	3	2	1	4	1	4	2	3	1	25	0.9%
413-Oil or other combustible liquid spill	0	0	0	0	1	0	1	0	0	1	0	0	3	0.1%
422-Chemical spill or leak	0	0	1	0	0	1	0	0	0	0	0	0	2	0.1%
424-Carbon monoxide incident	3	0	2	0	0	0	1	0	0	1	0	1	8	0.3%


Incident Type	Jan	Feb	Mar	Apr	May	Jun	Jul	Aug	Sep	Oct	Nov	Dec	TOTAL	%
441-Heat from short circuit (wiring), defective/worn	0	0	0	0	0	0	1	1	0	0	0	0	2	0.1%
442-Overheated motor	0	2	0	1	0	0	0	0	0	0	0	0	3	0.1%
444-Power line down	0	0	2	2	0	0	0	2	0	0	0	0	6	0.2%
445-Arcing, shorted electrical equipment	0	1	1	0	1	1	0	0	2	2	0	2	10	0.3%
463-Vehicle accident, general cleanup	1	1	0	0	0	0	0	0	0	0	0	0	2	0.1%
511-Lock-out	0	0	1	0	2	1	1	3	4	0	1	1	14	0.5%
522-Water or steam leak	2	1	1	3	3	0	0	1	2	0	0	3	16	0.6%
531-Smoke or odor removal	0	0	0	1	0	1	1	1	1	0	0	1	6	0.2%
541-Animal problem	0	0	0	0	0	0	0	0	1	0	0	0	1	0.0%
542-Animal rescue	0	0	0	0	5	0	1	0	0	0	0	0	6	0.2%
551-Assist police or other governmental agency	0	1	0	0	0	1	2	0	0	1	0	0	5	0.2%
552-Police matter	1	0	2	1	0	1	0	0	1	0	0	0	6	0.2%
553-Public service	0	1	0	1	1	1	1	2	0	1	1	1	10	0.3%
5530-Install smoke/CO detector	0	0	0	0	0	0	0	2	0	1	0	0	3	0.1%
5531-Replace smoke/CO detector battery - no alarm	1	0	1	0	1	3	6	3	0	5	5	2	27	0.9%
554-Assist invalid	8	9	12	6	7	2	2	9	10	5	5	11	86	3%
555-Defective elevator, no occupants	0	0	0	0	0	0	0	0	4	0	0	2	6	0.2%
561-Unauthorized burning	0	0	1	0	0	1	0	0	1	0	3	1	7	0.2%
571-Cover assignment, standby, moveup	0	0	0	0	0	0	0	0	0	0	1	0	1	0.0%
6001-Cable or phone wire down	0	0	1	0	1	0	0	1	0	2	0	0	5	0.2%
611-Dispatched & canceled en route	38	27	34	39	38	33	37	43	35	43	26	37	430	15%
621-Wrong location	0	0	0	0	0	0	0	0	1	0	0	0	1	0.0%
622-No incident found on arrival at dispatch address	5	2	7	7	4	11	8	7	7	5	5	0	68	2.4%
631-Authorized controlled burning	0	0	0	0	0	0	1	0	0	3	0	0	4	0.1%
651-Smoke scare, odor of smoke	3	2	2	0	0	0	3	0	5	4	1	0	20	0.7%
652-Steam, vapor, fog or dust thought to be smoke	0	0	1	0	0	0	0	0	1	1	0	0	3	0.1%
6611-EMS call, gone on arrival	1	0	0	1	0	0	0	0	0	0	0	0	2	0.1%
671-HazMat release investigation w/no HazMat	0	1	1	1	1	4	0	0	0	0	0	0	8	0.3%
6711-Odor of gas, nothing found	5	5	0	3	3	4	0	3	2	2	7	3	37	1.3%
6712-CO investigation, no detector, nothing found	0	0	1	0	0	0	0	0	0	0	2	0	3	0.1%
710-Malicious, mischievous false call, other	0	0	0	0	0	0	0	0	0	0	0	1	1	0.0%
714-Central station, malicious false alarm	0	0	0	1	0	0	0	0	0	1	0	0	2	0.1%
731-Sprinkler activation due to malfunction	3	1	0	1	1	0	0	0	3	0	0	0	9	0.3%
733-Smoke detector activation due to malfunction	6	3	1	4	5	4	7	9	6	5	3	1	54	1.9%
734-Heat detector activation due to malfunction	0	0	0	0	1	0	0	1	0	0	0	0	2	0.1%
735-Alarm system sounded due to malfunction	0	2	2	0	1	3	1	2	1	4	0	0	16	0.6%
7351-Fire alarm activation, unknown cause (for mutual aid	1	2	2	3	3	2	0	2	2	1	4	5	27	0.9%
736-CO detector activation due to malfunction	2	0	3	0	2	2	3	2	3	2	2	2	23	0.8%
740-Unintentional transmission of alarm, other	0	0	0	0	0	0	0	1	0	0	0	0	1	0.0%
741-Sprinkler activation, no fire - unintentional	0	1	2	2	0	1	0	1	0	0	1	0	8	0.3%
743-Smoke detector activation, no fire - unintentional	8	5	2	3	11	5	7	10	10	10	6	6	83	2.9%

Incident Type	Jan	Feb	Mar	Apr	May	Jun	Jul	Aug	Sep	Oct	Nov	Dec	TOTAL	%
744-Detector activation, no fire - unintentional	0	0	1	1	1	1	2	1	4	1	1	0	13	0.5%
745-Alarm system activation, no fire - unintentional	6	6	7	3	7	5	4	9	3	9	3	4	66	2.3%
746-Carbon monoxide detector activation, no CO	1	2	1	1	1	0	0	1	2	2	3	1	15	0.5%
813-Wind storm, tornado/hurricane assessment	0	0	4	0	0	0	1	0	0	0	0	0	5	0.2%
Blank. Incident Type not Entered													1	0.0%
Total for all Incident Types	222	209	230	223	233	230	251	248	274	279	235	241	2,876	

Alarms by Day of Week

Date Range: From 01/01/2023 to 12/31/2023

Plain Township Fire Department

Day of Week		Totals
Sunday		342
Monday		419
Tuesday		413
Wednesday		452
Thursday		425
Friday		451
Saturday		374

No Date 0
Total Alarms 2,876

Alarms by Time of Day

Date Range: From 01/01/2023 to 12/31/2023

Plain Township Fire Department

Time of Day	Call Count	
00:00 - 00:59	44	
01:00 - 01:59	57	
02:00 - 02:59	55	
03:00 - 03:59	45	
04:00 - 04:59	32	
05:00 - 05:59	38	
06:00 - 06:59	74	
07:00 - 07:59	93	
08:00 - 08:59	108	
09:00 - 09:59	156	
10:00 - 10:59	178	
11:00 - 11:59	194	
12:00 - 12:59	190	
13:00 - 13:59	182	
14:00 - 14:59	178	
15:00 - 15:59	170	
16:00 - 16:59	167	
17:00 - 17:59	166	
18:00 - 18:59	180	
19:00 - 19:59	157	
20:00 - 20:59	126	
21:00 - 21:59	124	
22:00 - 22:59	92	
23:00 - 23:59	70	
Total Alarms		2,876

2023 Miscellaneous Statistics

Total Incidents by Shift

(not including Special Events)

1 Unit = 967

3 Unit = 957

2 Unit = 934

Total Responses by Apparatus

(not including Special Events)

M121 = 1,553

E/R121 = 1,310

(1,184 as E121 vs. 126 as R121)

B121 = 754

L121 = 693

M122 = 207

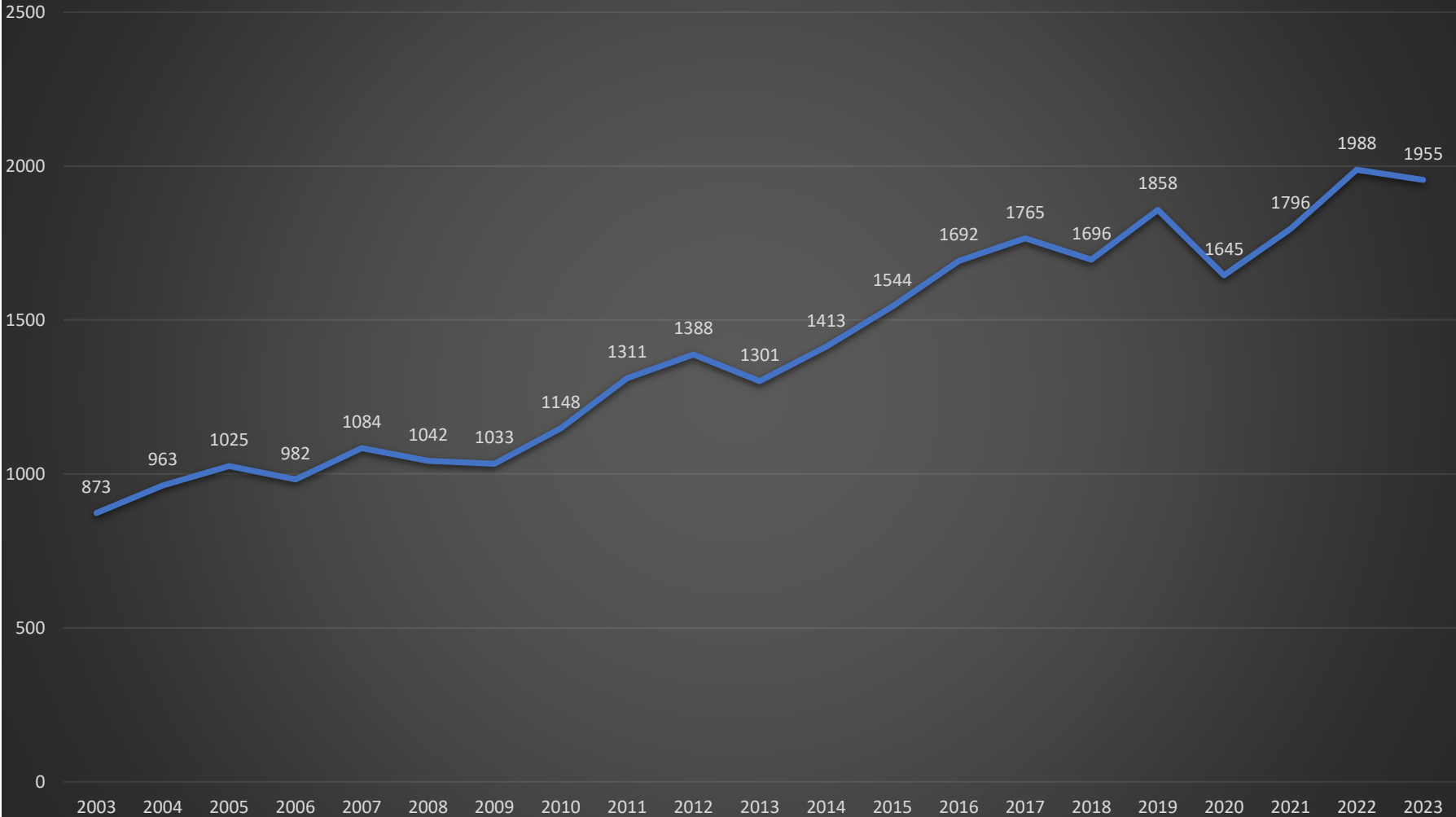
EMS121 = 62

E122 = 13

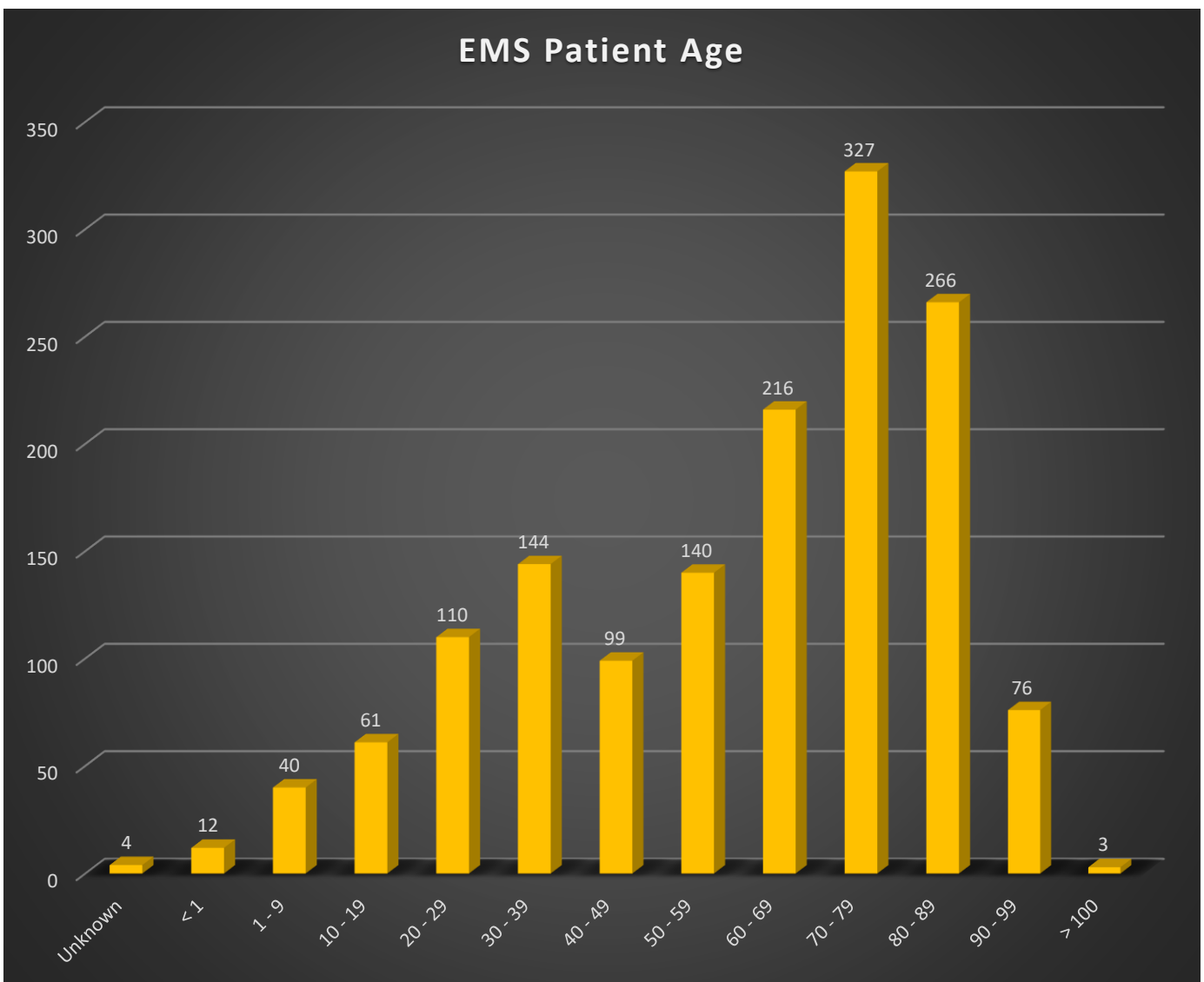
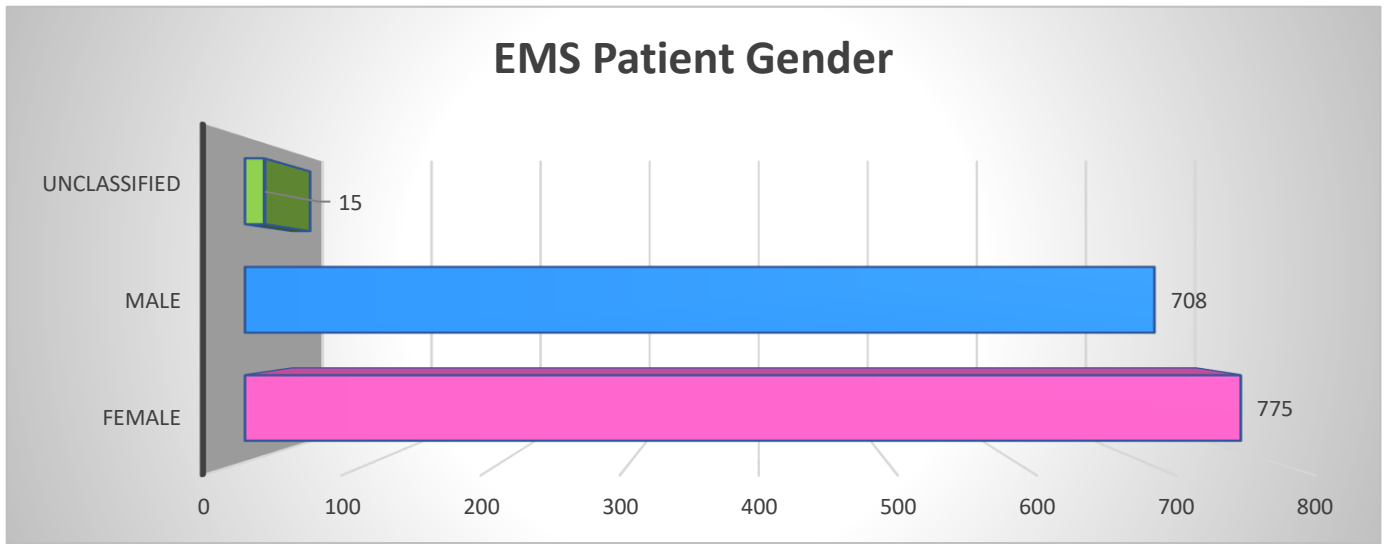
(not including running as E121)

Auto Extrications = 6

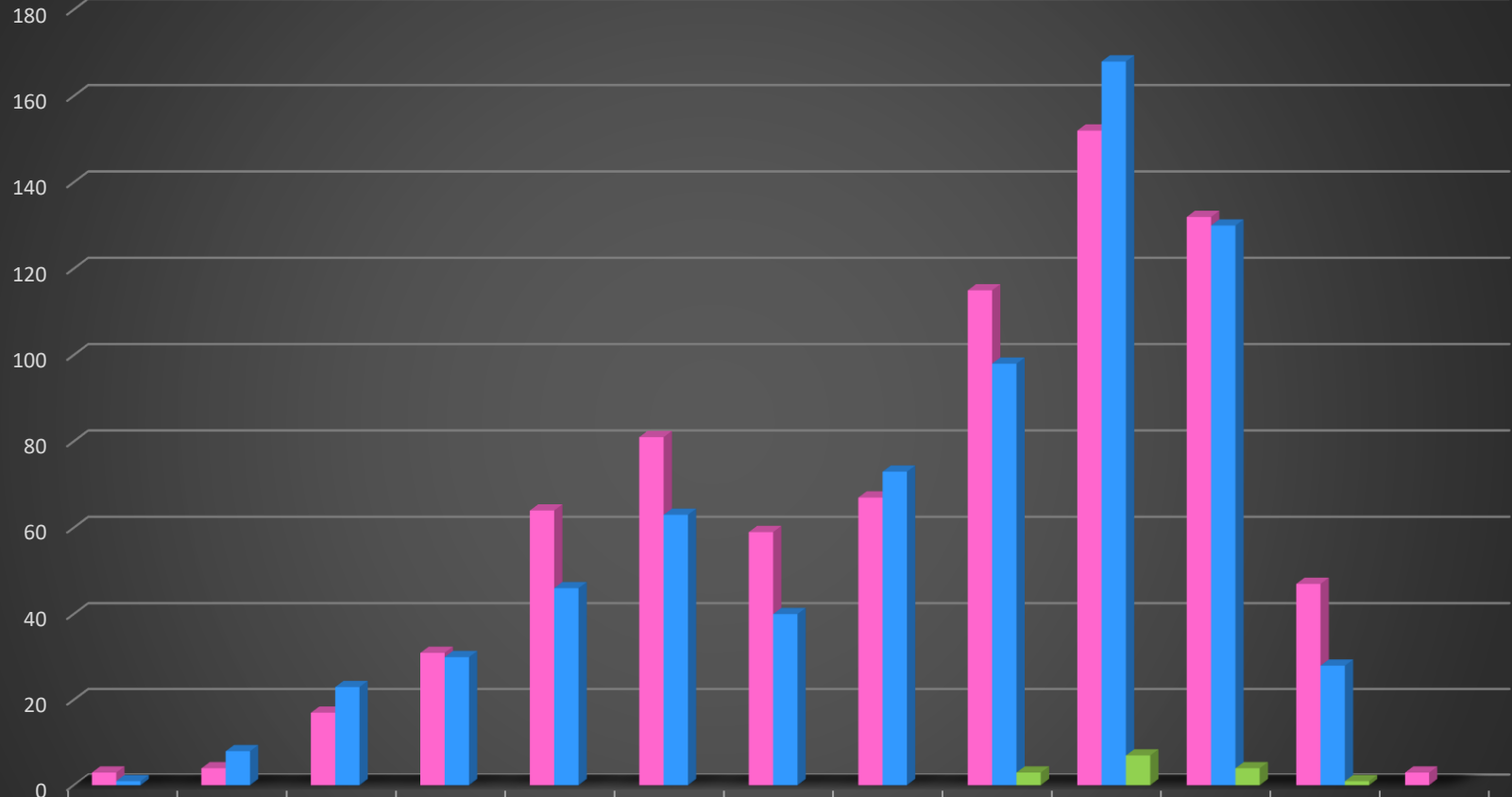
Annual EMS Run Totals



2023 EMS Patient Demographics



2023 EMS Patient Age by Gender



	Unknown	< 1	1 - 9	10 - 19	20 - 29	30 - 39	40 - 49	50 - 59	60 - 69	70 - 79	80 - 89	90 - 99	> 100
Female	3	4	17	31	64	81	59	67	115	152	132	47	3
Male	1	8	23	30	46	63	40	73	98	168	130	28	
Unclassified									3	7	4	1	

PLAIN TOWNSHIP FIRE DEPARTMENT

FIRE/RESCUE RUN STATISTICS

MONTHLY TOTALS

	2003	2004	2005	2006	2007	2008	2009	2010	2011	2012	2013	2014	2015	2016	2017	2018	2019	2020	2021	2022	2023
JANUARY	48	45	71	62	48	55	60	60	54	53	49	117	63	63	71	94	95	70	51	63	69
FEBRUARY	45	52	54	41	71	54	48	57	62	50	45	62	94	74	72	61	78	62	66	60	55
MARCH	40	60	58	48	50	43	61	41	45	44	55	64	71	60	71	62	67	89	68	65	73
APRIL	46	37	53	46	39	59	36	58	50	62	53	56	83	63	68	84	66	74	62	64	68
MAY	53	64	61	42	55	43	47	43	35	68	48	59	82	65	70	84	82	73	82	101	85
JUNE	38	49	65	54	55	69	54	59	54	70	53	64	73	68	64	78	116	87	89	82	71
JULY	55	48	69	51	48	51	37	59	70	86	70	79	61	70	82	90	79	77	73	75	85
AUGUST	62	53	80	61	51	52	45	68	57	60	64	51	66	80	98	72	91	89	80	80	89
SEPTEMBER	44	45	46	46	46	76	48	55	54	48	61	59	58	59	66	79	105	91	100	79	96
OCTOBER	47	48	44	62	47	51	54	66	54	60	56	76	65	69	63	74	89	93	71	81	96
NOVEMBER	48	36	53	40	54	44	49	61	74	68	75	87	80	75	70	78	96	76	77	90	75
DECEMBER	36	160	76	49	42	63	56	59	61	60	66	70	64	88	76	60	80	88	71	95	59
TOTAL	562	697	730	602	606	660	595	686	670	729	695	844	860	834	871	916	1044	969	890	935	921
% CHANGE	16.60%	24.02%	4.73%	-17.53%	0.66%	8.91%	-9.85%	15.29%	-2.33%	8.81%	-4.66%	21.44%	1.90%	-3.02%	4.44%	5.17%	13.97%	-7.18%	-8.15%	5.06%	-1.50%

117 = highest run volume for that month
 20-year average growth rate = 3.66%

RUNNING TOTALS

	2003	2004	2005	2006	2007	2008	2009	2010	2011	2012	2013	2014	2015	2016	2017	2018	2019	2020	2021	2022	2023
JANUARY	48	45	71	62	48	55	60	60	54	53	49	117	63	63	71	94	95	70	51	63	69
FEBRUARY	93	97	125	103	119	109	108	117	116	103	94	179	157	137	143	155	173	132	117	123	124
MARCH	133	157	183	151	169	152	169	158	161	147	149	243	228	197	214	217	240	221	185	188	197
APRIL	179	194	236	197	208	211	205	216	211	209	202	299	311	260	282	301	306	295	247	252	265
MAY	232	258	297	239	263	254	252	259	246	277	250	358	393	325	352	385	388	368	329	353	350
JUNE	270	307	362	293	318	323	306	318	300	347	303	422	466	393	416	463	504	455	418	435	421
JULY	325	355	431	344	366	374	343	377	370	433	373	501	527	463	498	553	583	532	491	510	506
AUGUST	387	408	511	405	417	426	388	445	427	493	437	552	593	543	596	625	674	621	571	590	595
SEPTEMBER	431	453	557	451	463	502	436	500	481	541	498	611	651	602	662	704	779	712	671	669	691
OCTOBER	478	501	601	513	510	553	490	566	535	601	554	687	716	671	725	778	868	805	742	750	787
NOVEMBER	526	537	654	553	564	597	539	627	609	669	629	774	796	746	795	856	964	881	819	840	862
DECEMBER	562	697	730	602	606	660	595	686	670	729	695	844	860	834	871	916	1044	969	890	935	921

Annual Fire/Rescue Run Totals

