

ALUMINUM HOSEBED COVER (W/FIXED CENTER SUPPORT)

(2) 5" X 10" SUCTION HOSES  
2 1/2" DISCHARGE HOSES  
FRC OPTIMUM 12V  
HID RECESSED LIGHT

(2) ADU HOSEBED DIVIDERS  
(2) PRE-CONNECT (CAF)  
(2) PIKE POLE CLIPS  
10' FOLDING  
24' 2-SECTION  
14' ROOF

DIAMOND GRADE  
CHEVRON STRIPING

WHELEN 600  
RED SUPER LEDS  
WELDON LED TAILLIGHTS  
HOSEBED STEP WITH TRAFFIC  
ADVISOR & BACK-UP CAMERA

LED STEP &  
GROUND LIGHTS

LEFT SIDE COMPARTMENTIZATION

COMP	DOORS	OPENING DIMENSIONS	INSIDE DIMENSIONS	VOLUME
L1	ROLL-UP	50" W X 56" H	56 1/2" W X 66" H X 27 1/4" D	58 CU. FT.
L2	ROLL-UP	52" W X 27" H	61 1/2" W X 36 1/2" H X 27 1/4" D	35 CU. FT.
L3	ROLL-UP	50" W X 56" H	53 1/2" W X 66" H X 27 1/4" D	55 CU. FT.

COMP	DOORS	OPENING DIMENSIONS	INSIDE DIMENSIONS
R1	ROLL-UP	50" W X 50" H	56 1/2" W X 60" H X 27 1/4" D
R2	ROLL-UP	52" W X 21" H	61 1/2" W X 30 1/2" H X 27 1/4" D
R3	ROLL-UP	50" W X 50" H	53 1/2" W X 60" H X 27 1/4" D

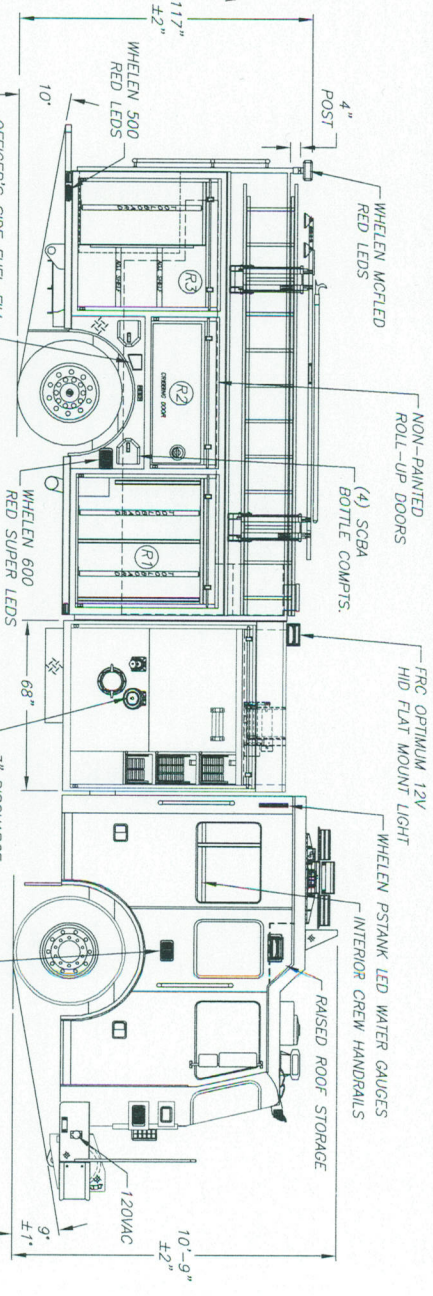
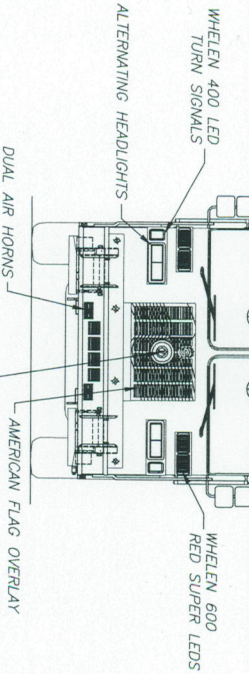
COMP	DOORS	OPENING DIMENSIONS	INSIDE DIMENSIONS
COMP	DOORS	OPENING DIMENSIONS	INSIDE DIMENSIONS
A1	ROLL-UP	37 1/2" W X 31" H	40" W X 40" H X 30 1/2" D

RIGHT SIDE COMPARTMENTIZATION  
TOTAL STORAGE: 307 CU.FT.

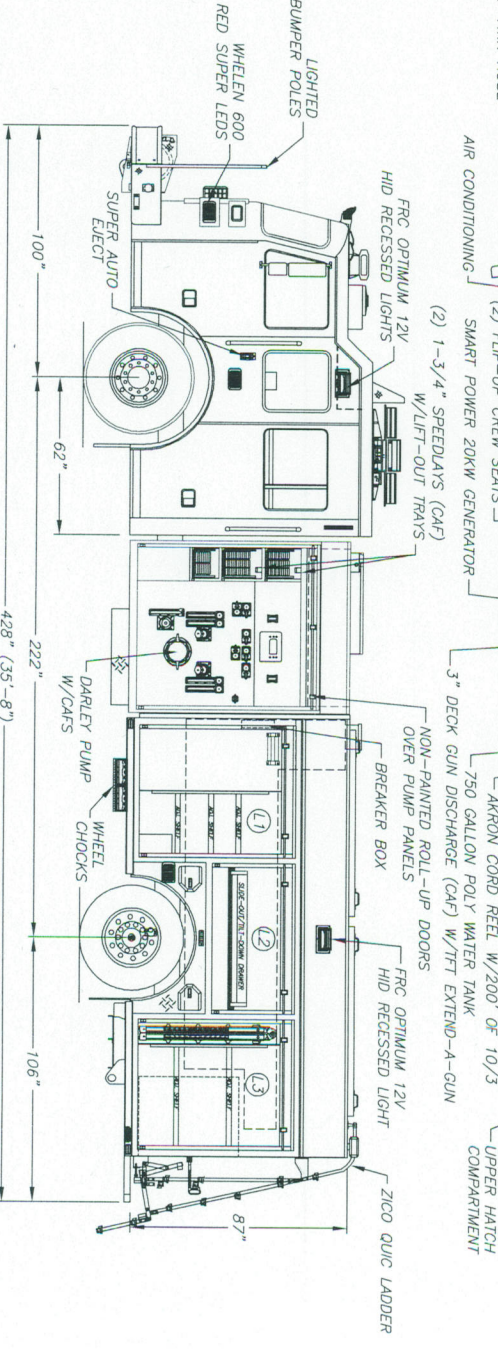
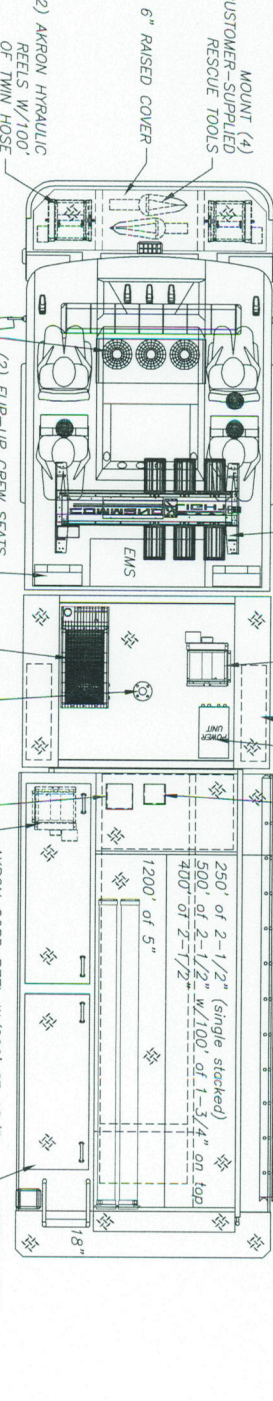
LED ICC/MARKER LIGHTS  
DEFROST FANS  
LANG MEKRA MIRRORS  
WHELEN 400 LED  
TURN SIGNALS

WHELEN FREEDOM  
(12) LED LIGHTBAR  
HID BROW LIGHTS  
WHELEN 600  
RED SUPER LEDS

ALTERNATING HEADLIGHTS  
DUAL AIR HORNS  
AMERICAN FLAG OVERLAY  
FEDERAL 02B



WHELEN 500  
RED LEDS  
OFFICER'S SIDE FUEL FIL  
AKRON CORD REEL W/200' OF 10/3  
COMMAND LIGHT 9000W LIGHT TOWER W/DEFLECTOR  
RUNNING BOARD HOSE TROUGH  
INSTALL CUSTOMER-SUPPLIED POWER UNIT  
40 GALLON FOAM TANK  
3" DISCHARGE  
W/STORZ ADAPTER  
WHELEN 600 RED/CLEAR  
SPLIT SUPER LEDS



THE INFORMATION PRESENTED ON THIS DOCUMENT IS TO BE USED FOR ILLUSTRATIVE PURPOSES ONLY AND IS NOT TO BE USED FOR CONSTRUCTION OF ANY PRODUCT. ANY CHANGES IN THE DESIGN OF OUR PRODUCTS AT ANY TIME, WITHOUT NOTIFICATION.

The undersigned approves this data for construction in accordance with any changes as indicated on these drawings.

APPROVED BY: \_\_\_\_\_ DATE: \_\_\_\_\_  
(Authorized Firm Dept. Representative)

SALES REPRESENTATIVE: \_\_\_\_\_ DATE: \_\_\_\_\_

REV. A CHANGES PER PRECONSTRUCTION MEETING

NOTHING IS INTENDED TO BE INTERPRETED AS A WARRANTY OR GUARANTEE OF ANY KIND. THE INFORMATION IS FOR INFORMATIONAL PURPOSES ONLY AND IS NOT TO BE USED FOR CONSTRUCTION OF ANY PRODUCT.

**SUTPHEN CORPORATION**  
2000 COLUMBUS-MARSHVILLE ROAD  
AKRON, OHIO 44302

DR. C. GREEN  
DATE: 3/19/10  
SCALE: NONE

PLANNING F.D.  
NEW ALBANY, OH  
PA-05 56/53

TEL. 330.375  
FAX 330.375  
HS-4841